



Bergen Family Center

Helping Local Families Since 1898



Annual Report

2017

OUR MISSION AT BERGEN FAMILY CENTER



We strengthen our community by providing services to individuals, families and children that enhance their ability to function independently, manage challenges and improve the quality of their lives.

We are the recognized leader in providing quality and comprehensive human services to people of all ages. We provide assistance at every stage of a family's life journey.



Families make up the fabric of our community. When we support and nurture individual family members we are able to make our community stronger. A stronger community creates a better place to live.



Helping Local Families Since 1898

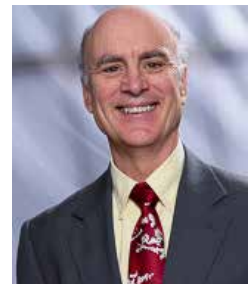


WELCOME

*From Sharon Kinsman Salmon,
Chairperson, Board of Trustees
and Mitch Schonfeld, President and CEO
Bergen Family Center*



Sharon Kinsman Salmon



Mitch Schonfeld

In 2017, we made significant progress in expanding our services to families and improving our facilities to enhance their experiences at BFC. Our strategic plan is on track as we continue to provide more services and a better environment for all of our clients. We are especially proud of being able to enhance our services for children, adolescents and older adults through cost-effective management and strategic outreach.

We continue to be engaged with generous individuals, families, and foundations in the Bergen County Community and beyond who help us share our message and our mission - resulting in new and continued philanthropic support.

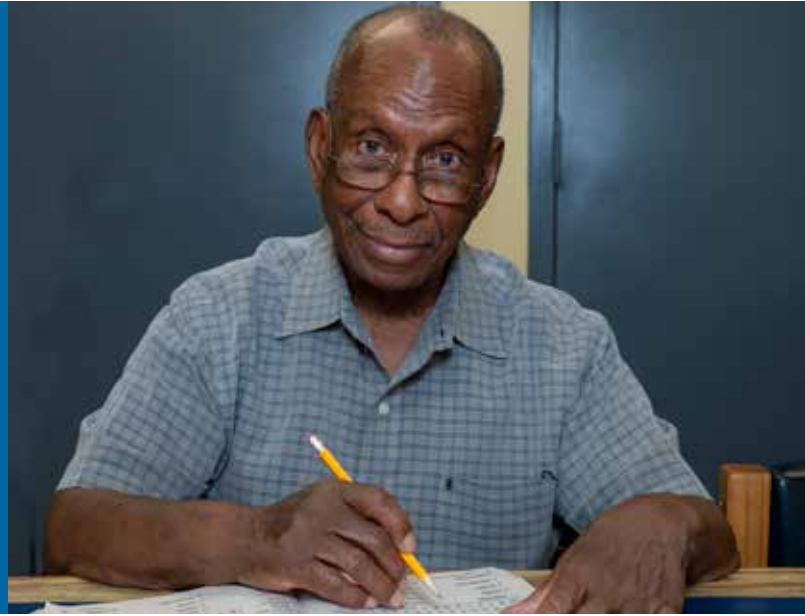
Nearly 5,000 children, teens, adults and seniors have received services provided by Bergen Family Center in 2017. The range of care and the depth of nurturing is impressive and underscores our commitment to helping families in Bergen County. Through our dedicated and passionate staff and our tireless volunteers, BFC is able to make every dollar count. We are able to touch the life of every individual in every generation.

Through generous families, individuals, foundations, and their ability to give, and through social programs provided by local, state and federal support, Bergen Family Center is able to continue the rich legacy of its founding families. We could not do it without your generous support and compassion. Thank you!



Our Vision

Bergen Family Center is a recognized community leader in providing quality and comprehensive human services to people of all ages.



Achieving Our Major Strategic Goals



Expand our Operating Infrastructure and Facilities required to improve and increase services.



Expand Programs & Services for Adolescents, Children and Older Adults.



Increase Awareness & Philanthropic Support.



Increase Opportunities for Volunteer Leadership & Engagement.

THE NUMBERS SHOW HOW WE HELPED

805

CHILDREN &
PARENTS

Children's Education and
Enrichment Programs

1,125

ADOLESCENTS

Supported through
Programs for Positive Life
Choices

275

SENIORS

Helped through Adult Day
Care and Home-Based Care

Counseling and Mentoring

BFC's Counseling Services Helped

1,100

Individuals

Our counseling services helped 1,100 individuals to manage personal challenges and improve their well-being, leading to a better community.

BFC's Coaching and Mentoring Helped

1,400

Family Members

We provided coaching, mentoring and professional support to some 1,400 family members, many of them children, helping to maintain stability and regain the ability to manage their lives.



FAMILIES HELPING FAMILIES

In 2017, more and more families in Bergen County recognized the work that we do. Through their financial support we are able to expand programs and improve our facilities.



Our sincere thanks to the family of
Ira & Shelly Taub
for refurbishing a pre-school classroom at
Bergen Family Center



Our sincere thanks to
Kelly & Ray Spitzley
for their hosting Bergen Family Center's first
Family to Family Challenge



EARLY CHILDHOOD SERVICES

Our children benefit from a structured and nurturing environment provided by our trained and qualified staff.

Leonard Johnson Early Learning Center

Bergen Family Center's Early Learning Center promotes positive child development and social interaction for infants to children five years old. Committed to excellence and high quality, our early learning center implements NJ Department of Education teaching standards, integrating Creative Curriculum across all age groups. By aligning our programs with a "best practices" curriculum, BFC prepares children for academic, social and emotional success.

We Set the Standard in Children's Education

With support from the Henry & Marilyn Taub Foundation and Montclair State University Center for Autism & Early Childhood Mental Health, our staff received rigorous training in curriculum development, classroom management and social-emotional development of young children. Several classrooms were outfitted with new equipment which was a great start in our goal of upgrading all of our classrooms.

For the last year, BFC has partnered with Grow NJ Kids, a statewide effort aimed at improving the quality of all NJ Early Learning Centers. Through the program, we've been able to increase the number of highly qualified, credentialed teaching staff who are dedicated to exceeding the standards of educators nationwide.



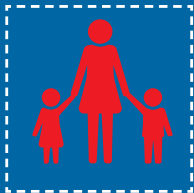
MILESTONES

Throughout 2017 we were able to expand programs and help more families than ever before.



Workshops for Parents

400 parents participated in our parenting workshops at Bergen Family Center in 2017. Better parents make a better community.



Clothing for Kids

Our Children's Clothing Closet provided more than 3,000 items of clothing in 2017 to families in Bergen County.

PARTNERS

Early learning can significantly raise reading and math scores in elementary school children. That's why we help our youngest students reach their full potential.



In 2017, we entered into a partnership with the Englewood Public School District to increase access to full day Pre-K for Englewood families.



In November, 2017 we opened three classrooms at BFC and are proud to continue our partnership with the Englewood Public School District in the 2018-2019 academic year.



SENIORS THRIVE AT BFC

BFC began several initiatives with our Senior Citizens to develop deeper friendships with other members of the BFC Family.

As a member of the Englewood Age Friendly Coalition we make it our mission to develop programs that specifically meet the needs of an aging population.

Intergenerational programming is a vital component of BFC's daily mission. We offer older adults a valuable opportunity to share experiences with some of our younger clients.

Young Meets Old

This year our seniors and children participated in several arts and crafts, music, and gardening projects. What made it special? Seniors and kids did these activities together.

Seniors who interact with children not only bridge an age gap but also provide invaluable knowledge to a younger generation.

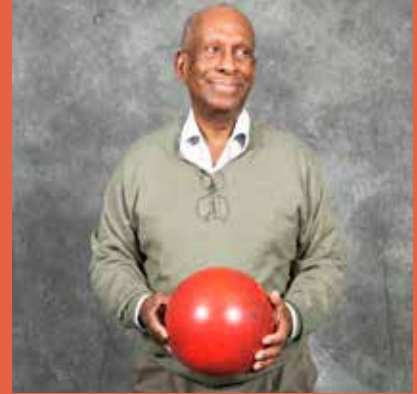
Through these inspiring moments we are able to help our seniors stay active and engaged. Our programs make older members of our community feel valued, and younger clients feel special.

Active Advocates

At Bergen Family Center, we feel that our seniors have an important voice in our community. This year, they made that voice heard at the annual Bergen County Senior Services Public Hearing on Transportation. BFC Seniors were vocal



Our Senior Care Management program helps solve many crucial issues which senior citizens may experience at a challenging time in their lives.



advocates who emphasized the daily challenges they face when public or state-sponsored transportation is not available. We were amazed at their commitment to help make a change and to enlighten lawmakers about this vital issue for an aging population.

Stay Home - Stay Healthy

BFC is committed to helping older adults “age in place.” We believe that older adults deserve self-determination in how they live out their older adult years.

We help seniors stay in their homes by offering adult daycare and services for homebound seniors.

Our dedicated and compassionate staff works with seniors and their families to en-

sure that they have access to medical and social support services needed to keep them safely in their homes.

Caregivers Need Care Too

Recognizing that caring for an older adult can be demanding, tiring and overwhelming, the George Link Jr. Foundation provides funds to help us ease the stress experienced by caregivers.

Caregivers provide a critical service to ensure that frail older adults are well cared for and remain connected to community.

Through monthly caregiver support groups, we provide a hot meal, mutual aid, relaxation and vital information to nurture and replenish caregivers.



SCHOOL-BASED YOUTH SERVICES

A Safe Place to Talk About Life, Friends, the Future and More.

The ZONE - The ZONE, a school based youth services program located at Dwight Morrow High School and the Janis Dismus Middle School, builds on the strength of young people and supports them as they strive for academic excellence and overall health and wellness. The highly credentialed ZONE staff provides comprehensive, culturally competent mental health and prevention services in a safe and affirming environment.

Project Speak Out - With a grant from Women United in Philanthropy, the ZONE implemented Project Speak Out, a gender based violence prevention program designed to prevent sexual and intimate partner violence by addressing these issues with adolescents within the school setting. WUIP is a women's giving circle which collectively

pools its philanthropy to make a positive impact on the lives of women.

Summer Business Apprenticeship Program - We believe in equipping young people with the skills necessary to participate in a competitive work force. Too many times they learn these lessons late in their careers and have to play "catch up" with other teens. That's why we believe in helping them early. We partner with local business owners and other community leaders to give high school students real-life work experience. We've helped 35 young adults get critical life experience with 22 different businesses in Bergen County. Our teens participate in a 6 week summer apprenticeship program, receiving a \$1,200 stipend at the end of the program.



PROJECT SPEAK OUT

A gender-based violence prevention program designed to prevent sexual and intimate partner violence with teens and young adults.



WE MEAN BUSINESS

We partner with local businesses to help young adults to compete in today's workforce. It's never too early to develop real-life experience to foster a healthy work ethic.



THE ZONE

Our school-based youth services program provides comprehensive clinical and primary prevention programs to students. We offer individual and group counseling, tutoring, workforce readiness, leadership development, and health education.





FAMILY SUCCESS CENTER

Strengthening Families. Supporting Families. Building Communities.

Our Family Success Centers are community-based, family-centered neighborhood gathering places where residents can go for family support, information, and services. We serve families in safe and supportive home-like environments designed to strengthen the family unit, build relationships, enrich the lives of community members, and make families and neighborhoods stronger.

HIPPY

Home Instruction for Parents of Preschool Youngsters (HIPPY) is an evidenced-based program that works with families in the home to support parents in their critical role as their child's first and most important teacher. The program empowers parents to prepare their children for success in school. Parents receive a carefully developed curriculum, books and materials designed to strengthen their children's cognitive skills, and early literacy skills. We also assist with critical social,

emotional and physical development for children at a critical time in their lives.

By serving diverse ethnic groups across the country, HIPPY is able to close the achievement gap by serving more than 16,000 families in almost 120 communities in the United States.

Strengthening Families

The Strengthening Families Program (SFP) is a nationally and internationally recognized program for all families. SFP is an evidence-based family skills training program found to significantly improve parenting skills and family relationships. The program reduces problem behaviors, delinquency, alcohol abuse and drug abuse in children. SFP also improves social competencies and school performance. Child maltreatment also decreases as parents strengthen bonds with their children and learn more effective parenting skills.



COMPASSION & SUPPORT

- Counseling for adults, adolescents, children and couples.
- Play therapy & parenting skills.
- Services for individuals and their families with HIV/AIDS.
- Free counseling to children and adult crime victims.
- Custody and parenting time evaluations ordered by the Bergen County Family Court.



COUNSELING SERVICES

Experts Supporting Families and Individuals.

Our trained, caring and licensed mental health staff provides a full range of services for men, women children and families. Through individual, group and family counseling, we offer emotional support and stress management to cope with trauma, grief and loss. Whether it's from an illness, a marital impasse, parent-child conflict, workplace issues, or being a victim of a crime, our experienced counselors are here to help.

We are especially proud of the services we provide for those effected by domestic violence and sexual assault.

Our counseling expertise extends to HIV/AIDS clients who receive peer to peer support, individual counseling, and community health services. We also help family members of HIV/AIDS clients who may also need support during a challenging time.

BFC's evaluators are trained in custody and visitation and they advise the Family Court on the placement and visitation of children of divorce. BFC offers free counseling to children and adult crime victims through New Jersey Victims of Crime Compensation Board (VCCB).

150

Clients Received Individual
and Peer Support

800

Family Members Evaluated
for Family Court

175

Clients Helped with Anxiety,
Depression & Trauma

Revenue & Expenses*

January 2017 - December 2017



Revenue



1. Contract and Grants	\$1,696,488
2. Fees and Third Party	\$1,593,578
3. Contributions	\$303,851
4. Fund Raising	\$476,001
5. Other Income	\$60,157
Total Revenue	\$4,130,075

Expenses



1. Personnel Costs	\$3,163,403
2. Professional Fees	\$324,227
3. Occupancy	\$230,599
4. Materials & Supplies	\$245,687
5. Other Expenses	\$166,681
Sub total of program expenses	\$4,130,597
Change in operations	(\$522)
Depreciation expense	\$57,092
Net change in value of investments	\$67,878
Change in program assets	\$10,264

* Results shown are audited



Our financial condition continues to improve thanks to robust efforts by our leadership to generate the resources needed to provide vital human services to our community.



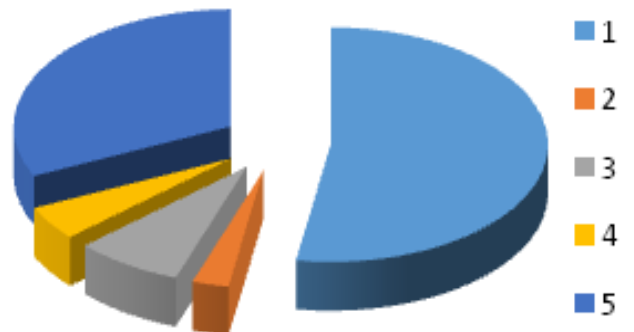
Distribution of Unduplicated Clients¹

1. Children’s Services	805
2. Adolescents	1,125
3. Elder Care Services	275
4. Clinical Services	1,100
5. Community Services	1,400
Total Unduplicated Clients	4,705



Distribution of Program Hours

1. Children’s Services	407,500
2. Adolescents	14,275
3. Elder Care Services	39,500
4. Clinical Services	23,750
5. Community Services	158,650
Total Program Hours	643,675



¹ Client who may be in more than one program

Staff 2017



Bergen Family Center Staff - 2017

Mitch Schonfeld, MSW
President/CEO

Elizabeth Corsini, MPH (Masters of Public Health)
Vice-President, Director of Programs

Mary Stevens, BS
Director of Finance

Davia Valenzuela, BA
Director of Human Resources

Alexis Cooperman, RN
Director of Development

Sheila Mack, LCSW
Director of Counseling

Marcia Gongora, MA
Director of Family Success Center

Mariam Gerges, LCSW
Director of School Based Youth Services

Glenda James, LCSW
Director, Early Childhood Education

Sheila Steinbach, LPC
Supervisor of Court Services

Nathalie Zapletal, MA
Communication & Development Manager

Iris Maldonado, BA
Supervisor of Care Management Services

Holly Scipio, BA
Supervisor, Adult Day Care



Board of Trustees 2017



Board Officers - 2017

Sharon Kinsman Salmon
Chairperson

Courtney Levi
Vice-Chair

Jayanne Tedesco
Vice-Chair

Harry Martin
Secretary

Emmeline Wexer
Treasurer

Board of Trustees - 2017

Anita Buckajian
C. Peter Croonquist
Phyllis Grossman
Martin Huguley
Irina Kashan
Marcia Levy
George Milne
Sue Proivetti
Scott Reddin
Ina Miller Silverstein
Dana Romita
Alissa Rudin
Frank Skuthan
Ina Miller Silverstein

OUR DONORS MAKE IT POSSIBLE

FAMILY CHAMPIONS - More than \$25,000

Keith V. Kiernan Foundation
George Link Jr. Foundation
Lillian P. Schenck Fund
Henry & Marilyn Taub Foundation

FAMILY BENEFACTORS - \$10,000 to \$24,999

Community Chest of Englewood
Barbara & Ron Couri
Christine & Peter Croonquist
Karen & Todd Eisenbud
Kaplen Foundation
Katina & Jeffrey Mayer
National Council of Jewish Women, Bergen County Section
PSEG
MaryAnn & Gordon Rich Foundation
Linda & Dr. Mauro C. Romita
Sharon Kinsman Salmon & Tom Salmon
Miyako & Edmondo Schwartz
Southpole Foundation, Inc.
Shelly & Ira Taub
Women United in Philanthropy



DID YOU KNOW?

MORE AND MORE FAMILIES ARE DEDICATING CLASSROOMS AT BERGEN FAMILY CENTER. IT'S A WONDERFUL WAY THAT FAMILIES HELP FAMILIES.

FAMILY PATRONS- \$5,000-\$9,999

Artie Agresta
Abby Bergoffen & Mitch Schonfeld
Broadway Cares/Equity Fights Aids, Inc.
Dwight Morrow Alumni Education Association
Englewood Health
First Presbyterian Church of Englewood
Sylvia Golden
Robert & Mary Jane Hekemian Foundation
Elizabeth Herman
Janney Montgomery Scott
Irina Kashan
Rana & Michael Liebowitz
Courtney & David Levi
Machiko & Neil Mazzella
MassMutual Trust Company
Jennifer Maxfield & Scott Ostfeld
NVE Bank
Charles E. Puglisi
Dana Romita
Abe Schonfeld
Jayanne Tedesco
UBS Private Wealth Management
April & Alex Uram
Wiseheart Foundation, Inc.

OUR DONORS MAKE IT POSSIBLE

FAMILY ADVOCATES - \$2,500 to \$4,999

J. Agresta
Gia & Victor Alvarez
Anonymous
Benzel-Busch Motor Car
Monica & Stephen Borg
Joel Buchman & Caroline Newman
Alexis & Kathryn Cooperman
Noreen Coyne & Frank Skuthan
June & George Croonquist
Englewood Chamber of Commerce
Englewood Rotary
Ellen & Louis Feldman
Barbara & William Fox
Kristin & Christopher Godek
Nita & Joseph Gottesman
Ann & David Hausmann
Helen & Patrick Herssens
John Hughes
Keith Kline
Natasha Leibel & Harlan Levine

Emily & Samuel Mann
McCance Foundation
Mercedes Benz, N.A.
Ina Miller & Michael Silverstein
Nick Pepe
Norman & Bettina Roberts Foundation
Alissa & Robert Rudin
Kelly & Mitchell Sacks
Shevaun & Steve Selvin
Jennifer & Gregory Shaia
Clare & Bill Sheridan
TD Bank
Peter Uzzolino
Emmeline Wexer & Robert Shlien
Sarah Wallace & Harry Martin
Withum, Smith & Brown
Stephanie & Jeffrey Wolfer
Zawie & Debs Real Estate Management
Robyn & Barry Zeller



DID YOU KNOW?

OUR DONORS CAN SPECIFY WHICH PROGRAMS THEY WOULD LIKE TO SUPPORT.

THE PERFECT DEDICATION FOR REMEMBERING SOMEONE YOU CHERISH IN YOUR OWN FAMILY.

FAMILY HELPERS - \$1,000 to \$2,499

Academy Bus	First Commerce Bank	Gloria & Ed Nelson
Darel Agresta	Barbara & Aron Forem	NJM Insurance
Nance' Agresta	Susan Delaney Frank	Karen O'Connor
American Friends of Leket Israel	Eva & Leo Gans	Oritani Bank Foundation
Adrienne & Chris Anderson	Nancy & Josh Gillon	Lisa & Dr. Mehmet Oz
Deborah & Donald Aronson	Hackensack University Medical Center	Ellen Quinn & Scott Coopchik
Edward Aversa	Judith & Arnold Herrmann	Irving Paltrowitz
Tia Barancik	Holy Name Medical Center	Sam Pessar
John Berg	Suzanne & Martin Huguley	Geraldine & John Roglieri
Nancy & Oded Berkowitz	Friends of Valerie Huttle	Karen Romaine
Carole Blancato	Gay & Graham Jones	Susan Russ
Chuck Bond	Peggy & Walter Jones	Rosemary & Jeff Russell
Robin Brown	Linda & Gideon Kamil	Lenore & Stephen Scheffer
Sherronda Oliver Brown	Jennifer & Elliott Kang	Irving Schwartz
Anita & Serge Buchakjian	Phyllis Grossman Kaplan & Bob Kaplan	Karen Silvera Foundation
Terri & Fadi Chartouni	Phyllis & Mark Kessler	Ronit & Jacob Slotsky
Steve Cirillo	Jennifer & Matt Kraft	Kelly & Ray Spitzley
Judith & Robert Cook	Jayne & Larry Lein	Maria Staphos
Elizabeth Corsini & Dr. Joshua Hyman	Marcia Levy	Norman Steiner
George Couri	Mitchell Lynn	SUEZ Water North Jersey
Deborah Davis	MAK Holdings	Larry & Jill Tauber
Annette & Rodney DeJarnett	Mariner's Bank	Timepiece Collection
Susan & Victor Del Rio	Anna & Neal Merker	Florence & Donald Tweel
Dawn & Armando Diaz	Stanley Miller	United Way of Bergen County
Lee Eisenberg	Carolyn & George Milne	Naida Wharton Foundation
Eric Epstein	Jennifer & Alan Mittleman	Shelly & Justin Wimpfheimer
Edward Fein	Christine & Tom Muir	Iris & Alan Wormser
Susan & Keith Feinberg	Melinda Nova	Dorothy York
Nila & Nazareth Festjekian		

FRIENDS OF THE FAMILY

DONORS WITH CONTRIBUTIONS OF \$1,000 OR LESS

ABC Photo	Blue Moon Mexican Cafe	Patrick Durkan
Elaine & Myron Adler	Blue Sky Yoga LLC	Dwight-Englewood School
Jack Agresta	Patrcia Boig	Jennifer Eby
Rob Agresta	Margaret Boyle	Francine Einiger
Denise Aguilar	Broadway Kitchens & Baths of	Richard Engle
Patricia Ahearn	NJ, Inc.	Kathleen Fay
Lynne & Joe Algrant	S. Brooks	Sharon Ferraro
American Endowment	Evalyn Brownstein	Shira & Robert Feuerstein
Foundation	Buckley's Drug Store	Karen Fierstein
Celia Argintar	Meg Campoli	Connie Fitzgerald
Mary & Ivan Arguello	June Campos	Lisa Fox
Dr. Russell Asnes	Natalie Capan & Gregory Amer-	Friends of Frank Valenzuela
Leila Attiyeh	kanian	Nicole Friscia
Jonathan Atwood	Central Park West	Anne & Calvin Frost
Avant Garde Technologies, Inc.	Circle Auto Service	Fusion Academy
Irma & Philip Ball	Gina Charles	Todd Mark Galante
Bank of America	Lisa & Kenneth Clifford	Rose Marie Gallo
Mounir Baroudi	Dana Coates	Thomas Gallo
Phyllis Baumrind	Sharon Coates	Pamela & Kenneth Gammill
Natalie Beaumont	David Cohen	Floyd & Phyllis Glinert
Phyllis Becker	Julie Cohen	Kevin Gao
Deborah Beeber	Lesley & William Collins	Maria & James Gardner
Ruth Beltran	Marie Cordner	Kay & Harold Gellert
Michael Benedict	Peter Coy	Roslyn F. Ginsberg
Benefit Foundations, LLC	Eileen & Gary Curry	Girl Scouts of Northern NJ
Bennie's Restaurant	Charles Croonquist	Laurie & Barry Goldman
Bergen PAC	Frederick Czulada	Amy & Steve Goldstein
Suzanne & Frank Bergman	Gavin Daly	Barbara & Matthew Golub
Lisa Bergqvist	Norman Davis	Tami Goodman
Mark Bernstein	Susan Davis	Russell Goodrich
Angelica Berrie	Don Dickstein	Rana Grossman
Beth Beyer	Louis DeMartino	Shel & Jeff Grossman
Bonnie Biondi	Carole Dinnhaupt	Rhonda Gruey
Kathleen & Roger Birch	James Dunn	Mary Ann Guerriero



DID YOU KNOW?

\$1000 PROVIDES ONE CHILD WITH A FULL YEAR OF AFTERSCHOOL SERVICES AT BERGEN FAMILY CENTER

Michael Gutter
Jacqueline Guttman
Jeffrey Hall
June Handler
Donna Hansen
Barrington Harris
Patrick Heeney
Judi Hermann
Lauren Hersh
Richard Hershcopf, MD
Sylvia & Gary Herzog
Adele Holman
Lauren & John Hrablook
Theodora & Edward Hunter
Alexander Hyatt, MD
I Dream of Jewels, LLC
Inserra Supermarkets, Inc.
Jennifer & Steven Ippolito
Lisa Irwin
David Isenberg
Ellen & Michael Jacobs
Vickie & Paul Jacobson
Jasmine & Vipinder Jaswal
Lamaar Jaswal
Barbara Johnson
Gordon Johnson
Joan Van Alstyne Johnson
Judith Johnson
Kate Johnson
Peggy Kabakow
Susan Kanrich
Robin Katz
Geraldine Kaufman
Karmen Keup

Charles Kimmelman
Bradley Kinsman
Elizabeth Kinsman
Kathryn Kislevitz
Lenora & John Klein
Judith & Joseph Klyde
Ruth & Martin Kornheiser
Barbara & Richard Kraft
Shilamida Kupershteyn
Sandra & Alan Kurth
Carlene Kuske
Clark LaMendola
Lee Langbaum
Alissa Latner
Laural Home, LLC
Ericka Lefari
Bernice Leventhal
Jodi Wechter Levy
Adina Lewittes
Jennie Li
Kate Liebhold
Gregg Lobel
Lukanik's Landscaping, Inc.
Kieran Lynch
Nancy Lynn
Sheila Mack
Susan & Timothy Madden
Joseph Malone
Lyndsay Marano
Steve Mardti
Beverly Marx
Jill & Erik Maschler
Julia Ann & James Mataras
Lillian McFarlane

Joseph McNally
Thomas Meerwarth
Margaret Veasy Mendoza
Elaine Meyerson
Men's Issues In Recovery
Mills & Mills PC
Thomas Molnar
Beatrice & Avedis Movsesian
MRS Bookkeeping Services, LLC
John Mustion
Mutual of America
Mariette NG
Hans J Nebel
Demetrius Nonas
Cecil Oberbeck
Amy Oliff
Susan Oliff
Bjorg Ollendorf
Palisade Jewelers, Inc.
Jane Park
Payroll Unlimited
Flora Perskie
Dori & Kenneth Persson
Annitsa & Phil Philliou
Maria & Gil Picinic
Cathy Pierorazio
Alexis & Andrew Pizzurro
Beatrice Podorefsky
Tami Post
Susan & Frank Proietti
Queen of Sheba Chapter No. 4
Margaret & Gangaram Ragi
Anil Ranawat
Carol Rauscher

FRIENDS OF THE FAMILY

DONORS WITH CONTRIBUTIONS LESS THAN \$1,000 - CONTINUED

Debra & Bernard Rawlins
Hedy & Scott Reddin
Alissa Reich
Joan & James Reich
Linda Reiter & Jeff Chinman
Diane Reitmyer
Carla Repollet
Maria Reuter & Victor Edward
Cathy Robertson
Charles Rosen Family Foundation
Susan Rosen
Lisa & Myron Rosner
Kate Rodgers
Regina Rohn
Joanne Romano
Lisa Romeohall
Dominic Roncace
Cheryl Rosenberg
Elle Rubach
Maria Ruggiero
Mia Sacks
Susan Sacks
Harriet & Michael Salk
Doris Sarokin
Koryn & Realf Schermer
Terry Schile

Lisa & Charles Schmid
Debra Schwartz
Iris Schwartz
Louise Schwartz
Bret Schwerdt
Sonia Minetti-Sengos
Joy & Richard Segall
Rosemary Seitel
Erin Semple
Christine Semsel
Molly Servais
Shreyas Shah
Michael Shannon
Shop Rite of Englewood
Amy Shulman
Ginny & Jerry Shulman
Heather Silberman
Kathleen Silberstein
David Singer
Fran Sisco
Elena & Michael Sisti
Ivy & David Solowiejczyk
Marcy Steele
Anne L. Strauss
Michelle & Steven Sweetwood
Joan Teichman
Victor Tenenbaum

Betty & Lester Tenney
Sarah Thompson
Trico Electric, LLC
Janet Troy
Rita Tulp
Mildred Vichiconti
Shawanda & Guy Vickers
Joe & Jillian Vogler
Bei Waldman
Eileen & Arnold Wechter
Election Fund of Weinberg For Senate
Michael Weitzner
Julia & Joseph Weksler
Norma Wellington
Chrissie Whetherbee
Emily & Robert Wilkins
Anna & Basil Williams
Lynda Williams
Simon Wilson
Lisa Wisotsky
Woman's Club of Englewood
Pauline Woods
Iris Wormser
Charles Wrubel
Jonathan York
Deborah Zingler

Volunteer

When you share both your time and resources you can create profound changes in the lives of our families. Join our "Friends of the Family" volunteers.

Planned Giving

Consider leaving a legacy for future generations by including BFC in your long term financial planning. There are a variety of financial options that can meet your charitable financial goals.

Donate Online

Make a difference close to home and improve your community. Your support will help nearly 5,000 Bergen County residents and make a difference in the lives of families.





Help Us Make Families
STRONG

Open your own "Charity Savings Account"

What if there were a "Charity Savings Account" that would help Bergen Family Center for years in the future? We've got it. It's called a Donor Advised Fund.

Donor Advised Funds (DAF)

A DAF is a charitable giving vehicle where you and your family can make an irrevocable contribution to the fund, earn an immediate tax deduction, and recommend grants to Bergen Family Center over time.

Make It a WIN-WIN

Through new tax laws, DAFs allow you to set up a "win-win" financial situation. You benefit by getting an immediate tax deduction and Bergen Family Center benefits by getting a charitable contribution for years to come. You can spread out your giving over time and even decide which BFC programs benefit from your generosity.

Check It Out

Consult with your financial planner or tax professional. Then call Alexis Cooperman (201 568-0817 x 126) in our development office at Bergen Family Center. We are a certified 501(c)(3) organization.

Friends of the Family

DINNER AND AUCTION

Each year Bergen Family Center holds it's annual dinner and auction to benefit hundreds of families in Bergen County, New Jersey.

The dinner and auction is a wonderful opportunity for you and your family to support the vital role Bergen Family Center plays in our community.

It's important to know that your donation stays right here in Bergen County and provides services to thousands of children, teens, adults and seniors.

Our dinner is also an evening in which you can learn more about our story and the innovative ways we help families every single day throughout the year.





PLATINUM SPONSORS

\$10,000 Pledge

Bergen Family Center Board of Trustees

Chris Plechy Prestige Family Wealth Advisors

PSE&G

MaryAnn Rich

Dr. & Mrs. Mauro C. Romita

Sharon Kinsman Salmon & Tom Salmon

FRIENDS OF THE FAMILY ANNUAL DINNER

SPECIAL THANKS TO OUR 2018 SPONSORS*

GOLD SPONSORS

\$7,500 Pledge

Kashan Family

Lenora & John Klein, Kelly & Ray Spitzley,
Annie & David Hausmann

Edward & Gloria Nelson and Family

SILVER SPONSORS

\$5,000 Pledge

Bergoffen-Schonfeld Family

Serge & Anita Buchakjian

Martha B. Leigh Charitable Fund,
Jonathan Herlands & Gerald J. Hammer, Trustees

Courtney & David Levi

Harry Martin & Sarah Wallace and Family

Dana Romita

Tedesco Family

April & Alex Uram



FRIENDS OF THE FAMILY ANNUAL DINNER

SPECIAL THANKS TO OUR 2018 SPONSORS*

BRONZE SPONSORS

\$3,500 Pledge

Brown Advisory

Alexis & Kathryn Cooperman

Noreen Coyne & Frank Skuthan

The Croonquist Group: Peter Croonquist,
Thomas Croonquist, George Croonquist

Englewood Health

Susan & Keith Feinberg

Susan & Lawrence Frank

Sylvia Golden

The Hyman Family

Irina's Kabbalah Friends

Emily & Sam Mann

NY Waterway

Jen Maxfield Ostfeld and
Scott Ostfeld

Dr. Charles E. Puglisi

The Norman & Bettina Roberts
Foundation

Alissa & Robert Rudin

Kelly & Mitch Sacks

Miyako & Edmondo Schwartz

Ina & Michael Silverstein

The Sourry Family

Frank Skuthan & Noreen Coyne

Emmeline Wexer & Dr. Robert Shlien

Cici & Alan Wilkinson and Family

Zawie & Debs Real Estate Management

* Sponsors listed as of October 1, 2018

HONOREES FOR 2018

SPECIAL THANKS TO OUR HONOREES FOR 2018 FOR THEIR VITAL SUPPORT OF BERGEN FAMILY CENTER. WITHOUT THEIR DEDICATION, HARD WORK, AND FINANCIAL COMMITMENT WE WOULD NOT BE ABLE TO EXPAND OUR PROGRAMS, MEET OUR GOALS AND CONTINUE TO HELP FAMILIES IN BERGEN COUNTY.

Sharon Kinsman Salmon BFC Board of Trustees Chair

For the last four years, Sharon has served as the Chair of our Board of Trustees, bringing her corporate expertise, compassion and high ethical standards to our organization. Before joining BFC's board, Sharon spent several decades as a world-class executive for Pfizer, Inc.



Irina Kashan BFC Trustee

For the past six years Irina has been a driving force in all areas of BFC's Fundraising and Development. Serving as Co-Chair of the Dinner Committee for four consecutive years, Irina transformed the fundraising efforts of our Annual Awards Dinner - increasing proceeds by more than 50%.



Gloria Nelson Community Philanthropist

Gloria has co-chaired Bergen Family Center's Silent Auction for the past 14 years and helped to raise more than \$250,000 for Bergen Family Center during that time. A passionate advocate for the BFC community, Gloria pledges, "If I can help one family, one child, one senior, to have a better life, I am truly blessed."

