



Bergen Family Center

Helping Local Families Since 1898



Annual Report
2018

OUR MISSION AT BERGEN FAMILY CENTER



We strengthen our community by providing services to individuals, families and children that enhance their ability to function independently, manage challenges and improve the quality of their lives.

We are the recognized leader in providing quality and comprehensive human services to people of all ages. We provide assistance at every stage of a family's life journey.



Families make up the fabric of our community. When we support and nurture individual family members we are able to make our community stronger. A stronger community creates a better place to live.

Helping Local Families
Since 1898

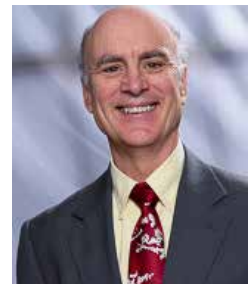


WELCOME

*From C. Peter Croonquist
Chair, Board of Trustees
and Mitch Schonfeld, President and CEO
Bergen Family Center*



C. Peter Croonquist



Mitch Schonfeld

In 2018, Bergen Family Center continued to expand our services and help more families than ever before. By improving our infrastructure, we provided an even better place to enhance the lives of infants, toddlers, teens and older adults. Thanks to a major improvement in our fund-raising efforts and continued efforts to improve our dedicated staff, we were able to provide more services and a better environment for all of our clients. Our focus on cost-effective management and strategic outreach has seen promise with significant results.

Nearly 5,000 children, teens, adults and seniors have received services provided by Bergen Family Center in 2018. The range of care and the depth

of nurturing is impressive and underscores our commitment to helping families in Bergen County. Through our dedicated and passionate staff and our tireless volunteers, BFC is able to make every dollar count. We are able to touch the life of every individual in every generation.

Through generous families, individuals, foundations, and their ability to give, and through social programs provided by local, state and federal support, Bergen Family Center is able to continue the rich legacy of its founding families. We could not do it without your generous support and boundless compassion. Thanks to you we are not only growing but thriving as well.

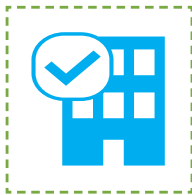


Our Vision

Bergen Family Center is a recognized community leader in providing quality and comprehensive human services to people of all ages.



Achieving Our Major Strategic Goals



Expand our Operating Infrastructure and Facilities so we can improve and increase services to our clients.



Expand Programs & Services for Adolescents, Children and Older Adults.



Increase Awareness of our Mission & Expand Philanthropic Support.



Increase Opportunities for Volunteer Leadership & Engagement.

THE NUMBERS SHOW HOW WE HELPED

798

CHILDREN &
PARENTS

Children's Education and
Enrichment Programs

1,101

ADOLESCENTS

Supported through
Programs for Positive Life
Choices

268

SENIORS

Helped through Adult Day
Care and Home-Based Care

Counseling and Mentoring

BFC's Counseling Services Helped

989

Individuals

Our counseling services helped nearly 1,000 individuals to manage personal challenges and improve their well-being, leading to a better community.

BFC's Coaching and Mentoring Helped

1,404

Family Members

We provided coaching, mentoring and professional support to some 1,400 family members, many of them children, helping to maintain stability and regain the ability to manage their lives.



Families Helping Families

In 2018, more and more families in Bergen County recognized the work that we do. Through their financial support we are able to expand programs and improve our facilities.



Our sincere thanks to
**Linda, Mauro, Dana
Romita & Family**
for donating and funding a brand new kitchen at
Bergen Family Center



Our sincere thanks to
Kelly & Ray Spitzley
for funding Bergen Family Center's first
Family to Family Challenge



EARLY LEARNING SERVICES

Our children grow and learn in a structured and nurturing environment provided by our qualified and caring teaching staff.

Leonard Johnson Early Learning Center

Bergen Family Center's Early Learning Center promotes positive child development and social interaction for infants to children five years old. Committed to excellence and high quality, our early learning center implements NJ Department of Education teaching standards, integrating Creative Curriculum across all age groups. By aligning our programs with a "best practices" curriculum, BFC prepares children for academic, social and emotional success.

We Set the Standard in Children's Education

With support from the Henry & Marilyn Taub Foundation and Grow NJ Kids our staff received rigorous training in curriculum development, classroom management and social-emotional development of young children. Several classrooms were outfitted with new equipment which was a great start in our goal of upgrading all of our classrooms.

For the last year, BFC has partnered with Grow NJ Kids, a statewide effort aimed at improving the quality of all NJ Early Learning Centers. Through the program, we've been able to increase the number of highly qualified, credentialed teaching staff who are dedicated to exceeding the standards of educators nationwide.



MILESTONES

High Marks for our Early Learning Center in 2018



High Marks for Our Early Learning Center

The Department of Children and Families and Grow NJ gave us great ratings. More than 120 children received high quality early learning services in newly renovated classrooms.



By Expanding Our Reach, Teens Prosper

Scores of Englewood Middle School students received after school academic support, health and wellness, enrichment, recreation and much more. Community leaders and your donations made it a reality.

PARTNERS

Our partnership with the Englewood Public School System extended beyond the school buildings - we opened a drop-in teen center for middle school students in October, 2018.



In 2018 we strengthened our partnership with the Englewood Public School System, while increasing access to public pre-k for 4 year olds.



Measurable success in the classroom led to plans for expanding access to 3 year olds for the 2019-2020 school year.



SENIORS THRIVE AT BFC

BFC began several initiatives with our Senior Citizens to develop deeper friendships with other members of the BFC Family.

As a member of the Englewood Age Friendly Coalition we make it our mission to develop programs that specifically meet the needs of an aging population.

Intergenerational programming is a vital component of BFC's daily mission. We offer older adults a valuable opportunity to share experiences with some of our younger clients.

Young Meets Old

This year our seniors and children participated in several arts and crafts, music, and gardening projects. What made it special? Seniors and kids did these activities together.

Seniors who interact with children not only bridge an age gap but also provide invaluable knowledge to a younger generation.

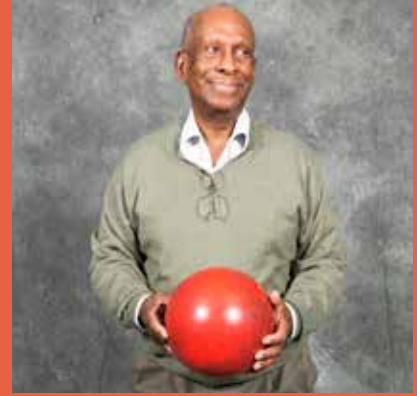
Through these inspiring moments we are able to help our seniors stay active and engaged. Our programs make older members of our community feel valued, and younger clients feel special.

Active Advocates

At Bergen Family Center, we feel that our seniors have an important voice in our community. This year, they made that voice heard at the annual Bergen County Senior Services Public Hearing on Transportation. BFC Seniors were vocal



Our Senior Care Management program helps solve many crucial issues which senior citizens may experience at a challenging time in their lives.



advocates who emphasized the daily challenges they face when public or state-sponsored transportation is not available. We were amazed at their commitment to help make a change and to enlighten lawmakers about this vital issue for an aging population.

Stay Home - Stay Healthy

BFC is committed to helping older adults “age in place.” We believe that older adults deserve self-determination in how they live out their older adult years.

We help seniors stay in their homes by offering adult day care and services for home bound seniors.

Our dedicated and compassionate staff works with seniors and their families to en-

sure that they have access to medical and social support services needed to keep them safely in their homes.

Caregivers Need Care Too

Recognizing that caring for an older adult can be demanding, tiring and overwhelming, the George Link Jr. Foundation provides funds to help us ease the stress experienced by caregivers.

Caregivers provide a critical service to ensure that frail older adults are well cared for and remain connected to community.

Through monthly caregiver support groups, we provide a hot meal, mutual aid, relaxation and vital information to nurture and replenish caregivers.



ADOLESCENT SERVICES

Fostering safe, nurturing, and stimulating spaces where teens grow and thrive.

The ZONE - Funded by the NJ Department of Children and Families, our school based youth services program reaches over 1,000 students each year at Dwight Morrow High School. For more than 13 years, the ZONE has provided critical mental health prevention, intervention, and crisis support in an accessible and reassuring environment. We take a strength based approach, while promoting resiliency and protective factors leading to academic success and overall health and wellness.

Project Speak Out - With a grant from Women United in Philanthropy, the ZONE implemented Project Speak Out, a gender based violence prevention program designed to prevent sexual and intimate partner violence by addressing these issues with adolescents within the school setting.

WUIP is a women's giving circle which collectively pools its philanthropy to make a positive impact on the lives of women.

Summer Business Apprenticeship Program -

We believe in equipping young people with the skills necessary to participate in a competitive work force. Too many times they learn these lessons late in their careers and have to play "catch up" with other teens. We partner with local business owners and other community leaders to give high school students real-life work experience. We've helped 35 young adults get critical life experience with 22 different businesses in Bergen County. Our teens participate in a 6 week summer apprenticeship program, receiving a \$1,200 stipend at the end of the program.



BFC TEEN CENTER

When our young people urged us to provide them with a safe and fun after-school program, *The Community Chest* stepped up with a special grant, so we could open the doors of our Teen Center in October, 2018. Their slogan of "Neighbors Helping Neighbors" shows in their support of BFC's teen center.



KEITH V. KIERNAN FAMILY

The Keith V. Kiernan Foundation helps us keep the doors open for our Teen Center. Their support allows us to provide a place for teens to visit after school, do homework, and talk about the challenges of growing up in a complex world.

TEDESCO FAMILY

The Tedesco Family saw the need to help BFC with financial support for our Teen Center - not just for this year but for years to come. Their generous contribution will allow teens to thrive in their most formative years. Thanks to the Tedescos, Bergen Family Center can continue the important mission of helping adolescents to reach their full potential.





FAMILY SUCCESS CENTER

Strengthening Families. Supporting Families. Building Communities.

Our Family Success Centers are community-based, family-centered neighborhood gathering places where residents can go for family support, information, and services. We serve families in safe and supportive home-like environments designed to strengthen the family unit, build relationships, enrich the lives of community members, and make families and neighborhoods stronger.

HIPPY

Home Instruction for Parents of Preschool Youngsters (HIPPY) is an evidenced-based program that works with families in the home to support parents in their critical role as their child's first and most important teacher. The program empowers parents to prepare their children for success in school. Parents receive a carefully developed curriculum, books and materials designed to strengthen their children's cognitive skills, and early literacy skills. We also assist with critical social,

emotional and physical development for children at a critical time in their lives.

By serving diverse ethnic groups across the country, HIPPY is able to close the achievement gap by serving more than 16,000 families in almost 120 communities in the United States.

Strengthening Families

The Strengthening Families Program (SFP) is a nationally and internationally recognized program for all families. SFP is an evidence-based family skills training program found to significantly improve parenting skills and family relationships. The program reduces problem behaviors, delinquency, alcohol abuse and drug abuse in children. SFP also improves social competencies and school performance. Child maltreatment also decreases as parents strengthen bonds with their children and learn more effective parenting skills.



COMPASSION & SUPPORT

- Counseling for adults, adolescents, children and couples.
- Play therapy & parenting skills.
- Services for individuals and their families with HIV/AIDS.
- Free counseling to children and adult crime victims.
- Custody and parenting time evaluations ordered by the Bergen County Family Court.



COUNSELING SERVICES

Experts Supporting Families and Individuals.

Our trained, caring and licensed mental health staff provides a full range of services for men, women children and families. Through individual, group and family counseling, we offer emotional support and stress management to cope with trauma, grief and loss. Whether it's from an illness, a marital impasse, parent-child conflict, workplace issues, or being a victim of a crime, our experienced counselors are here to help.

We are especially proud of the services we provide for those affected by domestic violence and sexual assault.

Our counseling expertise extends to HIV/AIDS clients who receive peer to peer support, individual counseling, and community health services. We also help family members of HIV/AIDS clients who may also need support during a challenging time.

BFC's evaluators are trained in custody and visitation and they advise the Family Court on the placement and visitation of children of divorce. BFC offers free counseling to children and adult crime victims through New Jersey Victims of Crime Compensation Board (VCCB).

150

Clients Received Individual
and Peer Support

664

Family Members Evaluated
for Family Court

175

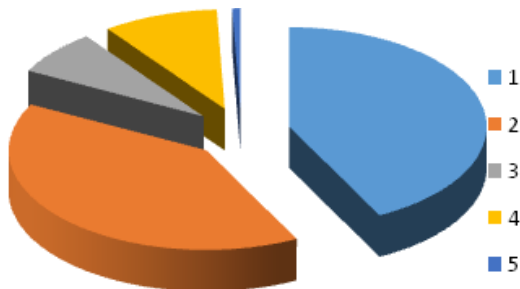
Clients Helped with Anxiety,
Depression & Trauma

Revenue & Expenses*

January 2018 - December 2018



Revenue



1. Contract and Grants	\$1,975,548
2. Fees and Third Party	\$1,779,185
3. Contributions	\$569,723
4. Fund Raising	\$417,340
5. Other Income	\$43,637
Total Revenue	\$4,785,433

Expenses



1. Personnel Costs	\$3,717,001
2. Professional Fees	\$287,467
3. Occupancy	\$207,644
4. Materials & Supplies	\$260,125
5. Other Expenses	\$181,765
Sub total of program expenses	\$4,130,597
Change in operations	\$131,431
Depreciation expense	\$66,843
Net change in value of investments	(\$61,974)
Change in program assets	\$2,614

* Results shown are audited



Our financial condition continues to improve thanks to robust efforts by our leadership to generate the resources needed to provide vital human services to our community.



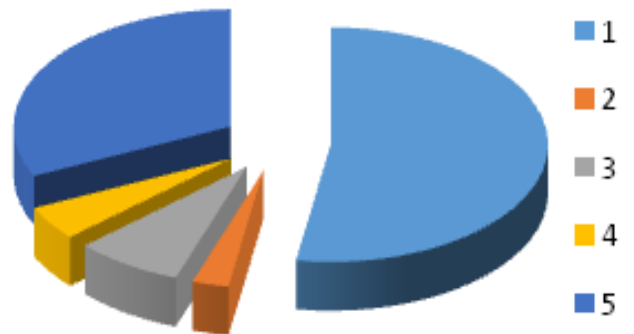
Distribution of Unduplicated Clients¹

1. Children’s Services	798
2. Adolescents	1,101
3. Elder Care Services	268
4. Clinical Services	989
5. Community Services	1,404
Total Unduplicated Clients	4,560



Distribution of Program Hours

1. Children’s Services	492,250
2. Adolescents	12,670
3. Elder Care Services	39,500
4. Clinical Services	22,150
5. Community Services	159,100
Total Program Hours	725,670



¹ Client who may be in more than one program

BFC Staff 2019



Administrative Team

Mitch Schonfeld, MSW

President/CEO

Elizabeth Corsini, MPH

Vice-President, Director of Programs

Alexis Cooperman, RN

Director of Development

Abel Bantyiwalu

Director of Finance

Davia Valenzuela, BA

Director of Human Resources

Program Team

Rachel Albanese, BA

Director of Home Visiting Services

Mariam Gerges, LCSW

Director of Adolescent Services

Glenda James, LCSW

Director of Early Learning Services

Sheila Mack, LCSW

Director of Counseling

Iris Maldonado, BA

Supervisor of Care Management Services

Sheila Steinbach, LPC

Supervisor of Court Services

Holly Scipio, BA

Adult Day Program

Natalie Valencia, MA

Director of Family Success Center

Nathalie Zapletal, MA

Communication & Development Manager



Board of Trustees 2019



Board Officers - 2019

C. Peter Croonquist, Chair

Senior Vice President of Investments
Janney Montgomery Scott

Harry Martin, Vice Chair

President & CEO Martin.Digital.Media
Former Anchor Fox 5 NY and My9 TV

Jayanne Tedesco, Vice Chair

Interior Designer, Community Leader

Alissa Kampner Rudin, Secretary

Co Founder at Protocall Systems

Frank Skuthan, Treasurer

President of Sagebrush Partners

Board of Trustees - 2019

Anita Buchkajian - VP, Monarch Realty Corporation

Phyllis Grossman - Retired, Elementary Educator,
Elisabeth Morrow School

Shel Grossman - Human Resources Consultant

Martin Huguley - President, Weichert Realtors,
Tenafly-Bergen County NJ Offices

Irina Kashan - Community Volunteer

Courtney Levi - Community Volunteer

Sue Proietti - Community Volunteer

Ina Miller-Silverstein - President, Bergen County
Development Center

Dana Romita - Community Volunteer

Sharon Kinsman Salmon - Retired, VP of Human
Resources, Pfizer; Principal, Kinsman Salmon, LLC

Joe Vogler - CFP, CPWA, Vice President UBS
Financial Services, Inc.

Emmy Wexer - Executive Partner, Alliance Cost
Containment

OUR DONORS MAKE IT POSSIBLE

FAMILY CHAMPIONS-(ABOVE \$50,000)

Mrs. Linda Romita & Dr. Mauro Romita & Family

Lillian P. Schenck Foundation

Kelly & Ray Spitzley

Henry & Marilyn Taub Foundation

FAMILY BENEFACTORS-\$25,000-\$49,999

Keith V. Kiernan Foundation

George Link Jr. Foundation

Nancy & Armand Pohan

Kelly & Ray Spitzley

Edward W. & Stella C. Van Houten Memorial Fund

Women United in Philanthropy



OUR STAFF MAKES IT A REALITY

FAMILY PATRONS- \$10,000-\$24,999

Community Chest of Englewood
Foundation of Northern New Jersey
Sylvia Golden
Kaplen Foundation
Irina Kashan
Laureus Foundation
Emily & Samuel Mann
National Council of Jewish Women, Bergen County Section
Chris Plechy
PSEG
MaryAnn & Gordon Rich Foundation
Dana Romita
Sharon Kinsman Salmon & Tom Salmon
Southpole Foundation, Inc.
Shelley & Ira Taub

OUR DONORS MAKE IT POSSIBLE

FAMILY PATRONS - \$5,000 to \$9,999

Abby Bergoffen & Mitch Schonfeld

Broadway Cares/Equity Fights Aids, Inc.

Anita & Serge Buchakjian

Terri & Fadi Chartouni

Noreen Coyne & Frank Skuthan

Dwight Morrow HS Education Association

Sylvia Golden

Martha B. Leigh Charitable Fund, Jonathan Herlands & Gerald J. Hammer, Trustees

Courtney & David Levi

McCance Foundation

Emily & Sam Mann

Neiman Marcus

Gloria & Ed Nelson

Panter Foundation

Alissa & Robert Rudin

Abe Schonfeld

Sydney & Steven Singer

TD Charitable Foundation

Jayanne Tedesco

April & Alex Uram

Sarah Wallace & Harry Martin

Wiseheart Foundation



DID YOU KNOW?

OUR DONORS CAN SPECIFY WHICH PROGRAMS THEY WOULD LIKE TO SUPPORT.

THE PERFECT DEDICATION FOR REMEMBERING SOMEONE YOU CHERISH IN YOUR OWN FAMILY.

FAMILY ADVOCATES - \$2,500 to \$4,999

Benzel-Busch Motor Car Brown Advisory	John Hughes Hyman Family	Bettina & Norman Roberts Foundation
Kathryn & Alexis Cooperman	Peggy & Walter Jones	Rosemary & Jeffrey Russell
Christine & Peter Croonquist Pamela DeBlasio	Lenora & John Klein Jen & Matt Kraft	Kelly & Mitchell Sacks Miyako & Edmondo Schwartz
Susan Delaney & Lawrence Franks	Rana & Michael Leibowitz Natasha & Harlan Levine	Donna & Ed Sirlin Amanda & Phillip Sourry
Englewood Health Englewood Rotary Club	NVE Bank Jenifer Maxfield & Scott Ostfeld	Emmeline Wexer & Robert Shlien
First Presbyterian Church of Englewood	Port Imperial Ferry Ina Miller Silverstein & Michael Silverstein	Cynthia & Alan Wilkinson Zawie Debs
Nita & Joseph Gottesman Annie & David Hausmann	Charles E. Puglisi	

FAMILY HELPERS - \$1,000 to \$2,499

Michael Benedict John S. Berg Patricia Boig Robin Brown	Phyllis Grossman & Robert Kaplan Helen & Patrick Herssens Raffy Hovanessian	Christine & Tom Muri Sheronda Oliver Oritani Bank Charitable Foundation
Jeanine Corrubia Barbara Couri Meg Campoli	Friends of Valerie Huttle Inserra Supermarket Investor's Bank Foundation	Sam Pessar Alice & George Philibosian Foundation
The Chinook Foundation Dawn & Armando Diaz Edward Fein	Jennifer & Eliot Kang Marcia Levy Mitchell Lynn	Karen Romaine Susan Russ Karen Silvera Foundation
Susan Feinberg First Commerce Bank Warren Geller	Management Decision Systems West, Inc. Anna & Neal Merker	Naida S. Wharton Foundation Shelly & Justin Wimpfheimer

FRIENDS OF THE FAMILY

Donors - \$500 - \$999

Adrienne & Chris Anderson
Mary & Ivan Arguello
Deborah Beran
Bank of America
Tia Barancik
Linda Reiter & Jeff Chinman
Steven Cirillo
Stephanie & Allen Collins
Marie Cordner
Dwight Englewood School
Suzanne Dyer
Ellen Feldman
Shel & Jeffrey Grosman
Mary Ann Guerriero
Lindsey & Gabriel Hakim

Suzanne & Martin Huguley
Joan Van Alstyne Johnson
Peggy Kabakow
Carlene Kuske
Mariner's Bank
Katina & Jeffrey Mayer
Rita Merendino
Jennifer & Alan Mittleman
Mutual of America
NJM Insurance Group
Dimitri Nonas
Deirdre Peterson
Susan & Frank Proietti
Scott & Hedy Reddin
Kate & Andrew Rodgers

The Charles Rosen Family
Foundation
Allison & Paul Rosenberg
Alexandra Ross
Rosemary & Jeffrey Russell
Gerette Allegra & Bahman Samian
Joy & Richard Segall
Michael Shannon
Todd Snyder
Ivy & David Solowiejczyk
Maria & George Staphos
Robin & Timothy Wentworth
Patricia Wood

Donors - \$250 - \$499

American Endowment Foundation
Edward Aversa
Carole Blancato
Broadway Kitchens & Bath
Virginia Carmellini
Maria Cicio
Lesley & William Collins
Gavin Daly
Ann & Norman Davis
James Dunn
Mila & Nazareth Festjekian
Barbara Forem
Patrick Grant
Patrick Heeney
Jenna Jacobs
Susan Kanrich
Geri Kaufman

Charles Kimmelman
Elizabeth Kinsman
Judy & Joe Klyde
Ruth & Martin Kornheiser
Lamendola Associates
LeMoyne College
Betty Tenney & Donald Levi
Jodi Wechter Levy
Tammy & Scott Mager
Susan Merker
Carol Schults & Andrew Mikesh
Bea & Advis Movsesian
James Norman
Otterstedt Agency
Cathy Pierorazio
CS Rackow
Joann Romano

Harriet & Michael Salk
Hannah & Joe Salvatore
Carol Schultz
Iris Schwartz
Mara Romita Skrapatis
Ronit & Jacob Slotky
Christy Smith
William Sorenson
Mindy Sprung
Francine & Adam Steinberg
Timepiece Collection
Jillian & Joseph Vogler
Emily Yang
Judy Chen & Kevin Yao
Anna Yusim
Kim & Luiz Zapiach



DID YOU KNOW?

\$1000 PROVIDES ONE CHILD WITH A FULL YEAR OF AFTER SCHOOL SERVICES AT BERGEN FAMILY CENTER

Donors - less than \$250

David Aboudi	Rose Marie Gallo	Leila Nelson
Justin Allen	Pamela & Kenneth Gammill	Stefanie Nelson
Natalie Capan & Greg Amerkanian	Maria Gardner	Caryn Ashare-Norman
Kelli Anderson	Amy Goldstein	Palisade Jewelers
Avant Garde Technologies	Barb & Matt Golub	Connie Pence
Bruce Balsam	Corinne & Rolf Hoexter	Sharon & Doug Potolsky
Danielle Baum	Adele Holman	Betinna Rance
Natalie Beaumont	Penni & Ivan Horwich	Carol Rauscher
Ruth Beltran	Kathleen Ibrahim	Robek Corp
Lisa & Olef Bergquist	Lamaar Jaswal	Sheryl Sarnak
Jodi Bienefeld	Maral & Sarkis Jebejian	Kate Johnson & Kevin Schaeffer
Shari Brooks	Jacqueline & Gordon Johnson	Lisa & Charles Schmidt
Evelyn Brownstein	Phyllis & Mark Kessler	Christine & Rich Semsel
June & Chris Campos	Susan Koenigsberg	Shoprite of Englewood
Emily Cardillo	Marlise Konort	June Siegler
Circle Janitorial Supplies	Brooke & Michael Lawson	Gina Sogluizzo
Laird Coates	Lisa Lax	Marci Steele
James Cole	Deena Levi	Susan Stohr
Christy & Paul Danforth	Lobster Life Systems	Joan & David Teichman
Paula & Michael Dillon	Arabelle Luke	Darlene Tomlinson
Marcia Dominguez	Sheila Mack	Mildred Vichiconti
Carol Egan	Pamella & Joseph Malone	Ilene & Arnie Wechter
Irene Finklestein	Elaine & Larry Meyerson	Emily & Robert Wilkins
Flowers Flowers	William Miller	Woman's Club of Englewood
Lisa Fox	Deanna & Oscar Moina	Myra & Charles Wrubel
Mindy Fox	Maria Mulry	Nathalie Zapletal
Aletta Frezzell	Jacqueline Murphy	Melanie & Barry Zingler

You Help Us Make Families Strong

Financial support with a huge impact on the lives of teen and kids.



Our sincere thanks to

Naida Wharton

for her lead gift for

The BFC Teen Center



Our sincere thanks to

Sylvia Golden

for refurbishing one of our

Preschool Classrooms



Bergen Family Center - 44 Armory St. Englewood, NJ 07631 - 10 Banta Place Hackensack, NJ 07601

You Help Us Make Families Better

A legacy of philanthropy lasting for generations.



Our sincere thanks to the family of
Ira & Shelley Taub
for supporting
The Shelley Taub Woman's Wellness Program



Our sincere thanks to
Sam & Emily Mann
for their donation of a
New Playground for Toddlers

Friends of the Family

Dinner and Auction 2019

Each year Bergen Family Center holds its annual dinner and auction to benefit hundreds of families in Bergen County, New Jersey.

The dinner and auction is a wonderful opportunity for you and your family to support the vital role Bergen Family Center plays in our community.

It's important to know that your donation stays right here in Bergen County and provides services to thousands of children, teens, adults and seniors.

Our dinner is also an evening in which you can learn more about our story and the innovative ways we help families every single day throughout the year.





PLATINUM SPONSORS*

\$10,000 Pledge

Bergen Family Center Board of Trustees

Anita & Serge Buchakjian

Harry Martin & Sarah Wallace

PSE&G

MaryAnn Rich

Dr. & Mrs. Mauro C. Romita

Sharon Kinsman Salmon & Tom Salmon

* Sponsors listed as of September 15, 2019

FRIENDS OF THE FAMILY ANNUAL DINNER

SPECIAL THANKS TO OUR 2019 SPONSORS*

GOLD SPONSORS

\$7,500 Pledge

Susan and Lawrence Frank & Family

SILVER SPONSORS

\$5,000 Pledge

Bergoffen-Schonfeld Family
Ray & Kelly Spitzley
Tiffany & Co.
Courtney & David Levi
Dana Romita
Alissa & Robert Rudin
Miyako & Edmondo Schwartz
Tedesco Family
April & Alex Uram



FRIENDS OF THE FAMILY ANNUAL DINNER

SPECIAL THANKS TO OUR 2019 SPONSORS*

BRONZE SPONSORS

\$3,500 Pledge

C. Peter & Christine Croonquist
Noreen Coyne & Frank Skuthan
Englewood Health
Sylvia Golden
The Hyman Family
Irina Kashan
Lenora & John Klein
M&T Bank
Emily & Sam Mann
Carolyn & George Milne
Gloria & Edward Nelson
Oritani Bank Foundation
Jen Maxfield Ostfeld & Scott Ostfeld
The Norman & Bettina Roberts Foundation
Emmeline Wexer & Robert Shlien

* Sponsors listed as of September 15, 2019

HONOREES FOR 2019

SPECIAL THANKS TO OUR HONOREES FOR 2019 FOR THEIR VITAL SUPPORT OF BERGEN FAMILY CENTER. WITHOUT THEIR DEDICATION, HARD WORK, AND FINANCIAL COMMITMENT WE WOULD NOT BE ABLE TO EXPAND OUR PROGRAMS, MEET OUR GOALS AND CONTINUE TO HELP FAMILIES IN BERGEN COUNTY.

Harry Martin BFC Board of Trustees Vice-Chair

Harry is an Emmy Award-winning TV Journalist who has anchored TV Newscasts at three of the leading television stations in New York City. As a reporter and anchor, he's covered major history-making news events such as The September 11th attack on the World Trade Center, the launch of the first Space Shuttle and four Presidential Campaigns. Harry now runs Martin.Digital.Media, a video production, graphics, and web design company. He is one of the most sought after media consultants in the tri-state area. He is Vice-Chair of the Bergen Family Center Board of Trustees.



Sarah Wallace Investigative Journalist WNBC

One of the region's best-known television journalists with more than 30 years of award-winning service to viewers, Sarah is a member of NBC 4 New York's investigative unit. In addition to earning 20 Emmy Awards for journalistic excellence, she has been recognized with the prestigious George Foster Peabody Award, and two Edward R. Murrow Awards. She received the "Outstanding Women" award from Hadassah of lower New York State. She is the recipient of the FBI National Academy Associates Honorary Award for her reporting on law enforcement.



Coach Barry Harris Mentor

Mentor, Director of Security Englewood Public Schools, and Head Football Coach Dwight Morrow High School, Barry Harris is a pillar in the City of Englewood. A graduate of Dwight Morrow High School, Harris attended Norfolk State University where he studied Business Administration. Raised in Englewood, Barry has been a driving force in Bergen Family Center's Teen Center, acting as mentor, teacher and friend. Harris is the proud father of Barry Jr. 35, and Larue age 29.

