

BERGEN FAMILY CENTER ANNUAL REPORT 2015

HELPING LOCAL FAMILIES SINCE 1898

WWW.BERGENFAMILYCENTER.ORG



Helping Local Families Since 1898

OUR MISSION

BERGEN FAMILY CENTER STRENGTHENS COMMUNITIES BY PROVIDING SERVICES TO INDIVIDUALS, FAMILIES AND CHILDREN TO ENHANCE THEIR ABILITY TO FUNCTION INDEPENDENTLY, TO MANAGE CHALLENGES AND TO IMPROVE THE QUALITY OF THEIR LIVES.





WELCOME

*From: Sharon Kinsman Salmon,
Chairperson Bergen Family Center Board
& Mitch Schonfeld, President and CEO
Bergen Family Center*

More than 4,200 individuals of all ages received services provided by Bergen Family Center this year. Our BFC team of 112 dedicated workers touched the lives of infants, toddlers, children, teens, adults, families, and older adults.

Their efforts generated 494,250 hours of service, helping individuals and families throughout our community address the challenges they face and achieve their potential.

The range of care and nurturing is impressive and underscores our commitment to helping families in Bergen County.



Sharon Kinsman Salmon



Mitch Schonfeld

This year, thanks to funding provided by the Henry & Marilyn Taub Foundation, we developed a comprehensive strategic plan. A key element of the planning process was an extensive series of surveys and personal interviews with key constituents, donors, volunteers and individuals receiving service.

Their input recommended efforts to expand our highly regarded programs for adolescents, children and older adults, strengthen our infrastructure, and increase volunteer engagement and support. The plan includes measurable goals and objectives to achieve these recommendations over the next three years.

Sharon Kinsman Salmon
Mitch Schonfeld

Our Vision

Bergen Family Center is a recognized community leader in providing quality and comprehensive human services to people of all ages.



Your continued support makes our accomplishments and achieving our future goals possible.



THE NUMBERS SHOW HOW WE HELPED

201

CHILDREN

Helped through Childcare
and Education Programs

974

ADOLESCENTS

Supported through
Programs for Positive Life
Choices

286

SENIORS

Helped through Adult Day
Care and Home Based Care

These achievements were made possible by your contributions, the dedication of our volunteers and staff, government grants, foundation support and client fees. Local businesses, religious institutions and schools provided volunteers and financial support.



FINANCIAL SUPPORT

Financial Support is the life-blood of any organization that services the community.



VOLUNTEER EFFORTS

Samsung, PNC Bank and Suez volunteers contributed their time and resources.



Thanks to funding provided by the Henry & Marilyn Taub Foundation Bergen Family Center was able to develop a comprehensive strategic plan.

Counseling Services Helped

1,092

Individuals

Our counseling services helped 1,092 individuals to manage personal challenges and improve their well-being, leading to a better community.

Coaching and Mentoring

1,302

Family Members

We provided coaching, mentoring and professional support to some 1,302 family members, many of them children, helping them maintain stability and regain the ability to manage their lives.





EARLY CHILDHOOD SERVICES

Our children benefit from the care and nurturing interactions with our trained and qualified staff in a structured environment

Leonard Johnson Day Nursery

Bergen Family Center's Leonard Johnson Day Nursery promotes positive child development and social interaction for infants to children five years of age. Through an array of daily educational activities, including reading, writing, arts and crafts, songs, and scholastic games guided by our devoted teachers, children are prepared for future academic, social and emotional success.

A Healthy Diet Helps Children Grow and Learn

For many children, the nutritious meals provided by BFC are crucial for their daily nourishment. Ana, our cook, prepares breakfast, lunch and snacks Monday through Friday for all the children. Lucas, Jayleana and Ryan in Ms. Aliya's "Sunshines" class always enjoy the lasagna and spaghetti but tacos is their absolute favorite. A healthy diet is essential early childhood development.

MILESTONES

Throughout 2015 we were able to expand programs and help more families than ever before.



Helping Parents

Did you know more than 500 parents participated in parenting workshops at Bergen Family Center in 2015?



Childrens Clothing Closet

The BFC Children's Clothing Closet provided more than 3,000 items of clothing, including prom dresses for 75 teenagers.



Summer Programs

Our Summer Camp and after school programs enriched nearly 100 children in 2015.



Oh Baby

We nurtured 15 infants, 36 toddlers, 55 preschoolers and their families through Leonard Johnson Nursery 2015.



Children at Play

SUEZ and Habitat for Humanity built a new outdoor playhouse for the children to enjoy.





ADULT DAY CARE

We realized a long time ago that older members of our community are an invaluable resource in building a better tomorrow.

BFC delivered a new health program in 2015 to 58 senior citizens and the Englewood community at large: a health fair which served as a means for seniors to assess their routine health. Critical information on health conditions affecting our seniors was exchanged under one roof, including diabetes, physical therapy, healthy heart alternatives and lifeline services.

Lillian Knight, a newcomer, was so grateful for this one stop shopping approach to health that allowed her to review all of her important health needs. She was ecstatic when an American Association of Retired Persons representative offered her a lifeline prevention application.

The amazing response from seniors at the health fair led to a daily “Art of Juicing” activity which brought a new dimension to the seniors and their health and wellness. Caroline, one of our ADC staff, combined a variety of fruits and vegetables to deliver a nutrient-packed, delicious shake every morning to the seniors. Caroline educated our seniors on the many benefits and health components of each juice and the positive effects it has on the mind and body. The seniors enjoyed learning and practicing new lifestyle and dieting changes. The apple and lemon combination remains the most popular.

Our Senior Care Management program helps solve many crucial issues which senior citizens may experience at a vulnerable time in their lives.



Technology Thrives

BFC offers “Shining Lights”, the only program in Bergen County that provides services for visually impaired seniors. The program teaches the seniors how to navigate in the darkness. With funds from the Hoffman Family Foundation, our clients learned to use adapted technology, including computers and iPads. Now, they listen to books, music, play games and most important, use voice recognition to improve their social skills. Angela, who has been a client at the Center since the early 90’s, is happy to participate in learning new skills. The iPads have opened up many venues for her, particularly Danielle Steele romance novels. She never misses a Friday book discussion group.

Senior Care Management

After Dolores learned she had chronic heart failure and a rare blood disorder,

she felt as if her life were over. On top of her health issues, her husband had recently died and she was being evicted from her home. Fortunately, a friend of Dolores referred her to Bergen Family Center’s Care Management program for home-bound seniors, where her life began to turn around. The program provides free care management services for low income senior citizens in Bergen County, as well as caregiver support and education groups, and linkage to programs that provide home care services.

Vital Emotional Support

Once at BFC, Dolores was assigned to a care manager who helped her find a bereavement group, where she met other widows who were experiencing similar feelings. She quickly began to receive emotional support and make new friendships. Her care manager

worked with her to navigate the legal system which culminated in a positive outcome - she was not evicted.

Key Services Delivered

Dolores was also connected to care-giver support, which included transportation and home care services. With free transportation, Dolores no longer had to worry about how she would get to her many medical appointments. Furthermore, she was given a home health aide to assist her with activities of daily living such as bathing, food preparation, cleaning, and shopping.

Dolores’ story is just one example of how the lives of home bound seniors are being changed every day at Bergen Family Center.





SCHOOL BASED YOUTH SERVICES

Adolescents confront many challenges. Social and emotional wellness is a critical component to academic achievement and economic advancement.

The ZONE - Funded by the NJ Department of Children and Families, The ZONE at Dwight Morrow High School provides comprehensive mental health and prevention services to more than 500 students in a safe and nurturing environment. Dedicated to building upon the strengths of students, the ZONE supports students as they strive to reach their full potential. Services include confidential counseling, academic support, college preparation, job placement, mentoring, gender based violence prevention, and leadership training.

Project 58 - Knitting as Therapy In October 2015, the ZONE launched a new program, *Project 58*. The new program served a dual purpose to help students

de-stress to promote health and wellness while knitting winter scarves for 58 seniors enrolled in BFC's Adult Dare Care Program.

Many of the scarves were created through a collective effort with the students working together as a team on a single scarf. Kara Cooper, a transition counselor at the ZONE, noticed the environment, which can normally be busy and loud, turned calm and quiet. The project enabled students to bond, relax and engage in good conversation. Project 58 not only aided as a stress reducer for students, it also brought them joy and the satisfaction of participating in a community service project.

PROJECT 58

"...Project 58 has made a huge impact on students relieving stress, whether it's school or family life –it has really helped."

Ms. Desirae, clinician at The ZONE



THE ZONE

Services are free and voluntary and offered Monday through Friday 8 AM to 5 PM



500 STUDENTS

The ZONE provided mental health and prevention services in a safe and nurturing environment for more than 500 students in 2015.





FAMILY SUCCESS CENTER

Bergen Family Center operates the only HIPPY program in New Jersey, and reaches diverse ethnic and geographic groups in Bergen County.

Judy Chicas came to BFC when she was three years old with her mother, Areli. Judy was having difficulties adjusting to day care and her behavior, at times, was a challenge. Once they visited the Family Success Center, they were helped through our “Mommy and Me” Program, which increases socialization skills. Soon after, they joined the Home Instruction for Parents of Pre-School Youngsters (HIPPY) Program, which strengthens the parent-child bond and enhances early learning.

For 30 weeks, a home instructor visited Judy and Areli, bringing curriculum, encouraging parent-child bonding, and building school readiness skills. Through monthly workshops and field trips funded and led by National Council of Jewish Women, Bergen County Section, the family was nurtured with peer support, educational enrichment, socialization and recreation.

Areli was thrilled with the progress Judy was making; her communication skills were improving and she began socializing more with other children. HIPPY provided Areli and Judy with tools for school readiness and also a sense of pride, self-esteem, confidence, and dignity.

Now, at age 11, Judy is thriving. She’s enthusiastic about learning and being involved in extra curricular activities and programs. She says she will become President of the United States of America. Before her run for the White House she plans on being a national bestselling author, since BFC helped her learn to appreciate and love books. She credits the educational head start she received from HIPPY and the enormous amount of support from the Family Success Center for providing her with a love for learning.

COUNSELING & INTERVENTION

Victims of domestic violence and sexual assault.
Families facing challenges that disrupt their lives.
Individuals diagnosed with or affected by HIV/AIDS.
Families & adolescents involved with Family Court.



Our group counseling and early intervention services help those living with HIV/AIDS offering friendship and support for so many in Bergen County.

Jenny was referred to Bergen Family Center when, at 34 weeks pregnant, she tested positive for HIV during her prenatal visit. Frightened for herself, her unborn baby and her older child, she also worried about her husband who had to be tested. While the medications available today can be taken during pregnancy and babies are no longer being born HIV positive, it was scary because Jenny found out her diagnosis just six weeks before her due date.

Paula Tenebruso, one of our Licensed Clinical Social Worker's, guided Jenny to reduce her stress and its potential negative impact on her and her baby's health. Paula got Jenny connected to an Infectious Disease

Specialist who accompanied her to her doctor visits. Paula and our staff also assisted her husband to get tested. Upon a positive result, they were immediately linked to the appropriate care. Lacking health insurance they were helped by BFC to gain eligibility for the Federal Ryan White grant to help cover his medications.

The day the baby was born, Paula was there to provide emotional support for Jenny and her husband. It was an unbelievably happy moment when Jenny delivered a healthy baby, who tested negative for HIV. Today, the family continues to do well and are grateful to Bergen Family Center for helping them through a very difficult time.

.....
Counseling and Early Intervention met or surpassed all of our contracted goals for health, outreach and early intervention services.

221 clients

100 % of them engaged in medical care and support services.

22 clients

Received Early Intervention Services from Bergen Family Center.

39 clients

Received individual counseling from Bergen Family Center.

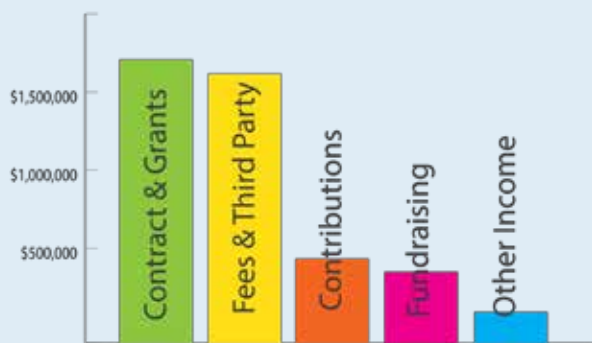


Revenue & Expenses

January 2015 - December 2015



Revenue



Contract and Grants	\$1,640,286
Fees and Third Party	\$1,551,912
Contributions	\$281,927
Fund Raising	\$365,777
Other Income	\$25,090

Expenses



Personnel Costs	\$2,731,212
Professional Fees	\$402,281
Occupancy	\$173,643
Materials & Supplies	\$259,675
Other Expenses	\$220,208
Sub Total Expenses	\$3,787,019
Change in Operations	\$77,973
Depreciation Expense	\$54,790
Net Change in Value of investments	(\$37,798)
Change in Program Assets	(\$14,615)

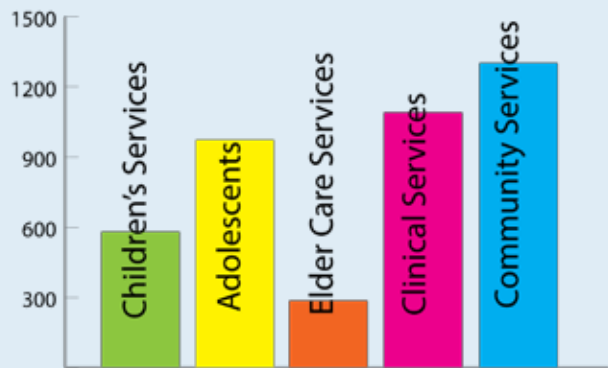
Results audited by Steven T. Cirillo, CPA

Our financial condition continues to improve thanks to robust efforts by our leadership to generate the resources needed to provide vital human services to our community.



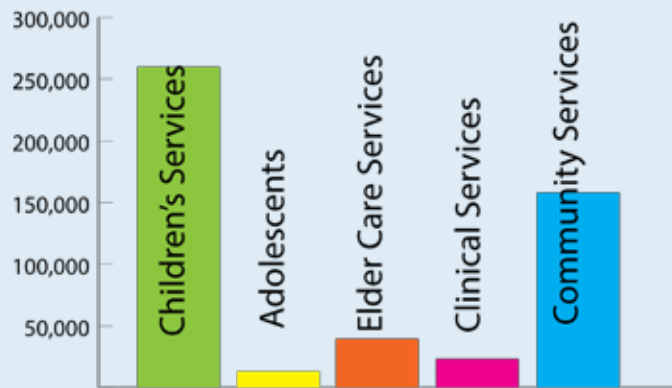
Distribution of Unduplicated Clients¹

Children's Services	581
Adolescents	974
Elder Care Services	286
Clinical Services	1,092
Community Services	1,302
Total Unduplicated Clients	4,235



Distribution of Program Hours

Services	259,800
Adolescents	13,425
Elder Care Services	39,700
Clinical Services	23,425
Community Services	157,900
Total Program Hours	494,250



¹ Client who may be in more than one program



Staff



Bergen Family Center Staff

Mitch Schonfeld, MSW
President & CEO

Mary G. Connolly, BA
Chief Development Officer

Elizabeth Corsini, MPH (Masters of Public Health)
Director of School Based Youth Services

John Cuttito, LCSW
Director of Clinical Services

Ester Freire, MA
Head Teacher

Marcia Gongora, MA
Director of Family Success

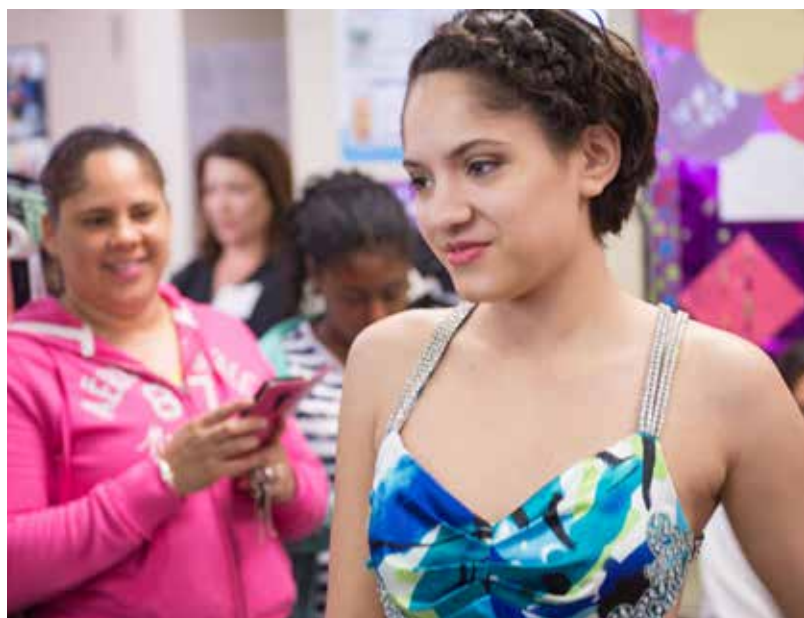
Sebastian Rodriguez, MS
Director of Programs & Administration

Sheila Shur, LCSW
Supervisor of Elder Care Management

Mary Stevens, BS
Director of Finance

Davia Valenzuela, BA
Director of Human Resources

Board of Directors



Board Officers

Sharon Kinsman Salmon
Chairperson

Courtney Levi
Vice-Chair

Scott Reddin
Vice-Chair

Jayanne Tedesco
Secretary

Emmeline Wexer
Treasurer

Board Members

Anita Buchakjian
C. Peter Croonquist
Phyllis Kaplan
Martin Huguley
Irina Kashan
Marcia Levy
Harry Martin
Ina Miller Silverstein
George Milne
Sue Proietti
Dana Romita
Jody Walker



OUR DONORS MAKE IT POSSIBLE

FAMILY CHAMPIONS - \$25,000 and more

Lillian P. Schenck Fund
Henry & Marilyn Taub Foundation

FAMILY BENEFACTORS - \$10,000 to \$24,999

Community Chest of Englewood
Kaplen Foundation
National Council of Jewish Women, Bergen County Section
PSEG
Linda & Mauro Romita
Sharon Kinsman Salmon & Tom Salmon
Clare & William Sheridan
Southpole Foundation, Inc.
TD Bank
Women United in Philanthropy

FAMILY PATRONS - \$5,000 to \$9,999

Broadway Cares & Equity Fights Aids, Inc.
Anita & Serge Buchakjian
Irina & Robert Kashan
Laureus Foundation
Courtney & David Levi
McCance Foundation
Jennifer Maxfield Ostfeld & Scott Ostfeld
PNC Foundation
MaryAnn & Gordon Rich Foundation
Dana Romita
Mitchell Schonfeld
TD Charitable Foundation
Jayanne Tedesco
Tedesco Family Foundation
April & Alex Uram
Emmeline Wexer
Wiseheart Foundation, Inc.
Donald Zilkha

DID YOU KNOW?

DONORS CAN MAKE SPECIFIC BEQUESTS TO ANY PROGRAMS WE HAVE AT BERGEN FAMILY CENTER

FAMILY ADVOCATES - \$2,500 to \$4,999

Lisa & Olof Bergqvist

Benzel Busch

Brookfield Investment Management, Inc.

Dawn & Armando Diaz

Dior

Englewood Economic Dev. Corp.

Englewood Rotary Club

First Presbyterian Church of Englewood

Nita & Joseph Gottesman

Melissa Geiger

John Hughes

Jasmine & Vipinder Jaswal

Gay & Graham Jones

Peggy & Walter Jones

Barbara & Richard Kraft

Phyllis Grossman Kaplan

Jayne Gurland Lein & Lawrence Lein

Natasha Leibel & Harlan Levine

Anna & Neal Merker

Monness, Crespi, Hardt & Co, Inc.

NJ School Age Child Care Coalition

Rosemary & Jeff Russell

Samsung Electronics America, Inc.

Ina Miller Silverstein & Michael Silverstein

Naida Wharton Foundation

Jacqueline & Eric Witmond

FAMILY HELPERS - \$1,000 to \$2,499

Alyssa Alfano

Adrienne & Chris Anderson

Jonathan Atwood

Tia Barancik

Bergen County Women's Alliance

Carole Blancato

Robin Odabash Brown

Frank Brusco

Terri & Fadi Chartouni

Steven Cirillo

Christine & Peter Croonquist

Pam DeBlasio

Susan & Victor Del Rio

Lana & Abraham Djebiyani

Lee Eisenberg

Ronnie & Edward Fein

Patricia Lowe Frieze Trust

First Commerce Bank

Elizabeth Frank

Karen & Marc Frankel

Eva & Leo Gans

Judy Gilbert

Phyllis Grossman

Helen & Patrick Herssens

Robin & Paul Hollander

Holy Name Medical Center

Suzanne & Martin Huguley

Hyman Family Foundation

Jasmin & Vipinder Jaswal

Maral & Sarkis Jebejian

Joan Van Alstyne Johnson

Lenora & John Klein

Jennifer & Matt Kraft

Clark LaMendola

Marcia Levy

Elaine Meyerson

Carolyn & George Milne

Jennifer & Alan Mittleman

Christine & Thomas Muir

Gloria & Edward Nelson

North Jersey Media Group

Novartis

Sam Pessar

Louis Pistilli

Susan & Frank Proietti

Karen Romaine

Mario Roselli

Jennifer Salzman

Karen & Thomas Santucci

Abe Schonfeld

Arianne & Arnold Schreer

Miyako & Edmondo Schwartz

Jennifer & Gregory Shaia

Michael Shannon

Marquita Smith

Phoebe Boyer & Todd Snyder

Kelly & Ray Spitzley

Steiner Sports Memorabilia, Inc.

SUEZ Water North Jersey

Temple Sinai of Bergen County

Toscana Italian Gourmet

United Way of Bergen County

Chris Vanore

Gertrude & Mea Weinberg

Shelly & Justin Wimpfheimer

Robin & Barry Zeller



FRIENDS OF THE FAMILY

DONORS WITH CONTRIBUTIONS OF \$1,000 OR LESS

ABC Photo	Abbey & Steven Braverman	Nancy Eckmayer
Jane Abraham	Broadway Kitchens & Baths of NJ, Inc.	Francine Einiger
Jayne Abramson	Caroline Brown	Karen Eisenbud
Andrew Abramowitz	Evalyn & Irwin Brownstein	Richard Engel
Academy Services, Inc.	Thomas Burak	Nancy & Klaus Engelmann
Debra Albanese	Angie Byun	Raymond English
Felipe Allegro	Meg Campoli	Bree Falato
Celia Argintar	Natalie Capan	Maria Falzo
Mary & Ivan Arguello	Danielle Capazzoli	Judith & James Farrell
Dr. Russell Asnes	Jeanne & Ignacio Cardona	Marie Favorito
Felicia & Jon Babrock	Center for Hope & Safety, Inc.	Ellen Feldman
Irma & Philip Ball	Charles Rosen Family Foundation	Nila & Nazareth Festjekian
Bruce Balsam	Maria Cicio	Debbie & Seth Finkel
Beverly Baker	Circle Mobile Service	Jennifer & Jeffrey Fletcher
Bank of America	Lisa & Kenneth Clifford	Ellen & Marc Foreman
Shadee & Greg Barkan	Suzannah & Charles Cline	Fort Lee Rotary Club
Jason Baynes	Steve Cohn	Barbara & William Fox
Natalie Beaumont	Kara & Aaron Cooper	Lisa Fox
Phyllis Becker	Marie Corder	Peter French
Deborah Beeber	Kellie & Gerard Costa	Nicole Friscia
Beer Family Foundation	Barbara Couri	Lonnie Gaddy
Michael Benedict	Roberto Cruz	Gallery 270 LLC
Benefit Foundations LLC	Gary Curry	Gloria Gallo
Amelia Gold & Bryan Benson	Marjorie Daniels	Thomas Gallo
Carole Benson	Ann & Norman Davis	Pamela & Kenneth Gammill
Suzanne & Frank Bergman	Christine & Dominic De Carlo	Lois & Gerry Gartenberg
Susan & Mark Berti	Linda Disher	Kay & Harold Gellert
Beth Beyer	Colleen Diskin & T.J. Quinn	Elena & Ira Goldfarb
Blue Moon Mexican Café	DMDB Kids	Laurie & Barry Goldman
Blue Sky Yoga, LLC	Marcia Dominguez	Amy Goldstein
Anthony Bosco	Norman Dorf	Barbara & Mathew Golub
Robert Bogossian	Michael Dugbartey	Marcia Gongora
Patricia Boig	James Dunn	Patria Gonzalez
Lee Ann Borg	Suzanne Dyer	Russell Goodrich

DID YOU KNOW?

\$1000 PROVIDES ONE CHILD WITH A FULL YEAR OF AFTER SCHOOL SERVICES AT BERGEN FAMILY CENTER

Kevin Marlat Graham	Christopher Dean Krogman	Rita Merendino
Shel & Jeffrey Grossman	Sandra & Alan Kurth	Steven Millman
Mary Ann Guerriero	Gladys & Herbert Laden	Susan Merker
Halbu Cleaner	Lakeland Bank	Natalya & Adam Michael
Hallak & Sons, Inc.	Cara Lake	Jeanne Michaud
June Moss Handler	Stephanie & Kenneth Landau	Mary Elizabeth Miracky
Charlotte Hansen	Brooke Lawson	Deanna Molina
Lindsay & Gabriel Hakim	Margaret Leahy	Leila Moore
Harvey Supplies Corp.	Ann Levenstein	Bea & Avedis Movsesian
Ann & David Hausmann	Jody Wechter Levy	MRS Bookkeeping Services, LLC
Daphne & William Helm	Kate Liebhold	Mutual of America
Richard Herschopf	Elaine Peiling & Chyang Lin	Noah Insurance Agency LLC
Adelle & Alex Holman	Penny Lippe	Edward O'Connor
Eva Holzer	Sarah Lopatin	Cecil Oberbeck
Jacqueline Hone	Eleanor Lubin	Orama Hospitality Group, Ltd.
Friends of Valerie Huttle	Kieran Lynch	Javier Ortiz
Inserra Supermarkets, Inc.	Francine Ma	Out of the Darkness
Jennifer & Steven Ippolito	Sheila Mack	Joanna Paliouras
Vickie & Paul Jacobson	Marc Madison	Palisades Jewelers, Inc.
Lamaar Jaswal	Tammy & Scott Mager	Party Girl, Inc.
Gordon Johnson	Iris Maldonado	Corey Payraudeau
Kate Johnson	Joseph Malone	Julian Payraudeau
Peggy Kabakow	Management Decision Systems West	Payroll Unlimited
Pamela Kaplan	Emily & Samuel Mann	Violet Penyacsek
Lilia Kan	Susan March	Karen & Bruce Perlowitz
Jennifer & Elliot Kang	Lorraine & George Marootian	Petrina Picerno
Karen Silvera Foundation	Patrick Maroun	Annitsa & Philip Philliou
Geraldine Kaufman	Harry Martin	Angela Piccininni
Regina Kay	Franklin Martinez	Alice & Richard Pierson, Jr.
Lori Kerman	Eva Martinez	Marie Pistilli
Mary Kilbourn	Evelyn Masheb	Karen & Stephen Pittleman
Kathryn Kislevitz	Julie Ann & James Mataras	Alexis & Andrew Pizzurro
Danielle & Seth Klein	Lillian McFarlane	Beatrice Podorefsky
Ruth & Martin Kornheiser	Men's Issues in Recovery	Elaine & Joseph Pollack



FRIENDS OF THE FAMILY

DONORS WITH CONTRIBUTIONS LESS THAN \$1,000 - CONTINUED

Prana, Inc.	Joy & Richard Segall	Davia & Frank Valenzuela
Jackie & Jonathan Prince	Shreyas Shah	Anne Van Dyke
Nancy & Michael Profita	Janet Sharma	Mildred Vichiconti
Sean Quinn	ShopRite of Englewood	Bei Waldman
Bettina Rance	Ronald Shultz	Hanita Walia
Helen & Scott Rapfogel	Asaad Siddiqi	Ashleigh Walker
Gloria & Edward Rattner	Kathleen Silberstein	Jody Walker
Carol Rauscher	Silicon Valley Community	Ilene & Arnold Wechter
Heddy & Scott Reddin	Elena & Michael Sisti	Weinberg for Senate
Linda Reiter & Jeff Chinman	Sandra Slipp	Julia & Joseph Weksler
Ridgewood Orthopedic Group, LLC	Ivy & David Solowiejczyk	Robin & Timothy Wentworth
Randy Riotto	Philip Sourry	Elizabeth Whiting Whipple
Kate Rodgers	Barbara & Stuart Soyster	Michelle & Stephen Wiessner
Laurie Roemmele	Morgan Stanley	Anna & Basil Williams
Regina Rohn	Marcy Steele	Rochelle & Stewart Winner
Karen Romaine	Beryl & Harold Steinbach	Jaqueline Wisner
Elle Rubach	Franci & Adam Steinberg	Women's Club of Englewood
Susan Russ	Pamela Sunshine	Patricia & John Wood
Jonathan Sacks	Coleen Tavorara	Wendy Worden
Kelly & Mitchell Sacks	Paula Tenebruso	Adela & David Weuselblatt
Harriet & Michael Salk	Betty & Lester Tenney	Yusuwan Enterprises, Inc.
Bahman Samiian	Brenda Thomas	Nathalie Zapletal
Charlotte Schoen	Erin & Lamarr Thomas	Lisa Zappal
Miriam Schonfeld	Tania Torres	Melanie & Barry Zingler
Iris Schwartz	Janet Troy	
Janney Montgomery Scott	Florence & Donald Tweel	

Volunteer

When you share both your time and resources you can create profound changes in the lives of our families. Join our "Friends of the Family" volunteers.

Planned Giving

Consider leaving a legacy for future generations by including BFC in your long term financial planning. Contact us to discuss a variety of financial options that can meet your charitable financial goals.

Donate Online

Make a difference close to home and improve your community. Your support will help nearly 5,000 Bergen County residents and make a profound difference in the lives of families.

2016 ANNUAL DINNER

Wednesday November 16, 2016

Rockleigh Country Club

26 Paris Avenue, Rockleigh, NJ 07647

Cocktails and Auction - 6:00 pm

Dinner, Silent Auction & Awards - 7:45 pm

HONOREES

Lamarr Thomas & Yessenia Gonzalez

Bergen Family Center School-Based Adolescent Services

SPECIAL THANKS TO OUR 2016 SPONSORS

PLATINUM

BFC Board of Trustees

PSEG

Mary Ann Rich

Dr. and Mrs. Mauro C. Romita

Sharon Kinsman Salmon & Tom Salmon

SILVER

Irina & Robert Kashan

Courtney & David Levi

Dana Romita

Bergoffen-Schonfeld Family

Tedesco Family

April & Alex Uram

The Martin-Wallace Family - Harry, Sarah, Sara and James

BRONZE

Anita & Serge Buchakjian

Oritani Bank Charitable Foundation

TD Bank

Town Motors

